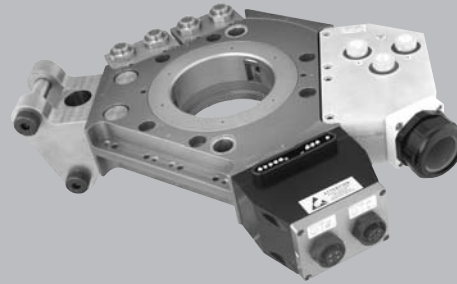


# Sigma Modules

With onboard optional pneumatic, electrical, and coolant modules mounted directly to the Sigma 3.1 or Sigma 5.1, the Sigma Modules offer the flexibility to disconnect any utility requirement.



## Features and Benefits

- All modules are interchangeable between the Sigma 3.1 and 5.1, reducing spare parts investment and installation time.

Not exactly what your application requires? Applied Robotics can design a solution that meets your particular application needs.

## Applications

- Spot welding (Pneumatic/Servo)
- Material handling
- Machine loading/unloading
- Mold changing
- Docking systems
- Pallet coupling systems
- Pick and place operations
- Press transfer

## Engineering Data

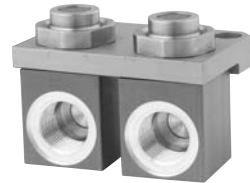
### VALVE MODULE



Description	Weight	Cv	Max Response time	Operating Pressure	Power Voltage (VDC)	Consumption (WDC)
<b>External Valve Module Two Position, Double Solenoid, Latching</b>	0.57 kg/ 1.26 lb	0.9	24 ms	6 bar +/- 1 87 psi +/- 15	24	1

Overall dimensions: 126.0mm x 57.0mm x 43.0mm (4.96" x 2.24" x 1.69")  
Control cable included

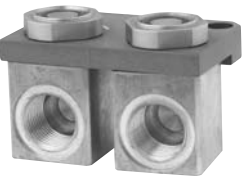
continued



## PNEUMATIC MODULE

Description	Weight	Fitting size	Cv
<b>Pneumatic Module</b>	0.36 / .8 lb	3/4 NPT / BSPP	1.54
<b>Pneumatic Module</b>	0.36 / .8 lb	3/4 NPT / BSPP	1.54

Overall dimensions: 76.0mm x 51.75mm x 50.0mm (2.99" x 2.04" x 1.97")  
 Special version includes fittings and hose to supply valve



## COOLANT MODULE

Description	Weight	Fitting size	Cv
<b>Brass External Coolant Module</b>	0.36 / .8 lb	3/4 NPT / BSPP	1.54
<b>Brass External Coolant Module</b>	0.36 / .8 lb	3/4 NPT / BSPP	1.54

Overall dimensions: 76.0mm x 51.75mm x 50.0mm (2.99" x 2.04" x 1.97")  
 Special version includes fittings and hose to supply valve



## HKVA MODULE

Description	Number of Contacts	Weight	Amperage Rating	Voltage Rating
<b>Robot</b>	3	1.4 kg / 3.08 lb	200	600
<b>Tooling</b>	3	1.5 kg / 3.3 lb	continuous	