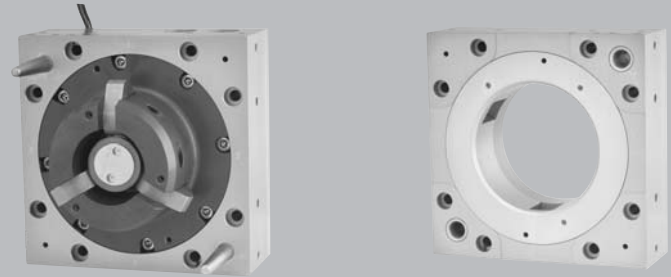


MXC160 Modules Quick Connect

QuickConnect modular connection systems are designed for automated equipment that requires frequent connection and disconnection of utilities.



Features and Benefits

- The family of QuickConnect System is the most flexible connection system on the market.
- 4 open module locations are provided for custom configuration of the MXC160 for your application.

Not exactly what your application requires? Applied Robotics can design a solution that meets your particular application needs.

Applications

- Test Benches
- Part Identification
- Robotic Tool Changing
- Mold Changing
- Rotary Turntables
- Docking Systems
- Power Clamps and work holding fixtures
- Pallet Coupling Systems

Engineering Data

ELECTRIC MODULE



Description	Weight	Pass through utilities	Connector	Material
Master Adaptor	0.18 kg/	28 contacts @ 5 Amp, 0-240 VAC/VDC	32 pin mil spec	Delrin w/Gold plated contacts
Tool Adaptor	0.15 kg/	28 contacts @ 5 Amp, 0-240 VAC/VDC	32 pin mil spec	Delrin w/Gold plated contacts

Master Adaptor overall dimensions 85.5 x 38 x 61 mm
Tool Adaptor overall dimensions 85.5 x 38 x 36 mm

continued

PNEUMATIC MODULE



Description	Weight	Pass through Utilities	Pressure	Cv	Material
Master Adaptor	0.34 kg/	(4) Check Valved 3/8 BSPP Ports	0.15 bar (0 - 220 psi)	1.11	Aluminum
Tool Adaptor	0.24 kg/	(4) 3/8 BSPP Ports	0.15 bar (0 - 220 psi)	1.11	Aluminum

Master adaptor Overall dimensions: 139.5 x 30 x 35mm
 Tool adaptor Overall dimensions: 139.5 x 25 x 35mm



WATER/COOLANT MODULE

Description	Weight	Pass through Utilities	Pressure	Cv	Material
Master Adaptor	0.59 kg/	(4) Check Valved 3/8 BSPP Ports	0 - 6 bar (0 - 87 psi)	1.54	Aluminum/ Chrome plated Brass
Tool Adaptor	0.59 kg/	(4) Check Valved 3/8 BSPP Ports	0 - 6 bar (0 - 87 psi)	1.54	Aluminum/ Chrome plated Brass

Master adaptor Overall dimensions: 139.5 x 30 x 38mm
 Tool adaptor Overall dimensions: 139.5 x 30 x 38mm

